

ashirvad

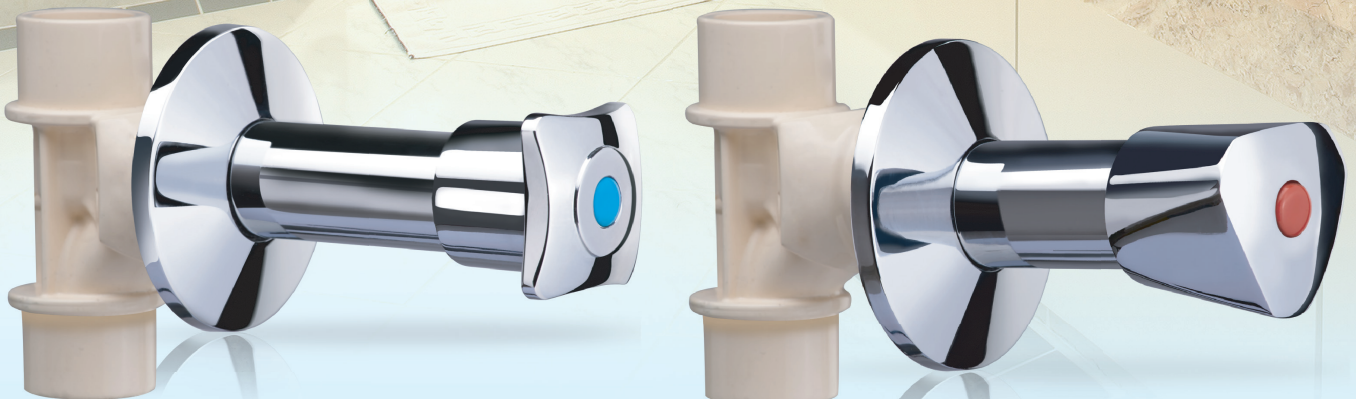
by aliaxis

CPVC/uPVC CONCEALED VALVE

Helps to cut off main water supply.

- ✓ Material : CPVC & uPVC
- ✓ Sizes: ½", ¾" & 1"
- ✓ Stem length : long and short
- ✓ Brass Mechanism : ¼ turn and full-turn
- ✓ Variants of Brass Knob - Triangle, Round, Square & Flora

**Higher Efficiency
& Greater Savings**



In order to cut off main water supply and to avoid the usage of additional brass components for assembly, a range of concealed valves in CPVC body are now made available by Ashirvad.

Long and short stem lengths with 1/4 turn and multi-turn mechanism as well as multi-variant knobs are available. No pressure drop across the valve is foreseen.

Spindle sizes - 1/2" & 3/4"

Benefits:

- **Cost Saving**
Eliminates brass connection, saving cost for 2 MABT
- No chances of rusting & pitting
- **Easy to Install**
Easy to install with plain sockets

Unique Selling Point:

Higher efficiency & greater savings

Variants:

Long Concealed Valve



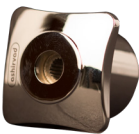
Short Concealed Valve



Concealed Knobs



Triangle



Square



Round



Flora



Triangle



Square



Round