

ashirvad

by **alixis**

PAN CONNECTORS

FASTER INSTALLATION LEAK-PROOF JOINTS

WHY ARE ASHIRVAD PAN CONNECTORS THE BEST CHOICE ?

- ✓ Moulded in high grade engineered plastic
- ✓ Simple pushfit assembly
- ✓ Flexible and self adjusting for slight movement
- ✓ Leak and odour proof
- ✓ Cost effective and maintenance free
- ✓ Available in **straight** and **offset** of 18 mm and 40 mm
- ✓ Connects with different materials
- ✓ **Re-usable** with **aesthetic appeal**
- ✓ Individually packed with lubricant and instruction manual



WARRANTY ON ASHIRVAD PRODUCTS NOT APPLICABLE IN CASE OF USE IN COMBINATION WITH ANY OTHER BRAND / MAKE OF PIPES, FITTINGS AND SOLVENT/ LUBRICANT.

Pushfit
SWR SYSTEM

Multikwik[®]
TECHNOLOGY FROM UK



Ashirvad - Leadership You Can Trust

Ashirvad has been setting benchmarks for quality since 1975. The leader in the manufacture of PVC and CPVC piping systems, Ashirvad Pipes is OHSAS 18001:2007, ISO 9001:2015 and ISO 14001:2015 certified and is a National Award winning company. With its state-of-the-art factory spread over 50 acres, the company has an annual manufacturing capacity of 2,00,000 metric tons and manufactures a complete range of high technology and superior quality plastic piping systems for domestic and agricultural use. The manufacturing systems adhere to the highest level of international quality for a maintenance free life.

Pan Connectors

To connect toilets with horizontal/vertical outlets to standard SWR pipework, Ashirvad has introduced a new range of products that are plumber friendly in nature. Made of flexible plastic, the connectors tolerate movement, are leak proof (with multiple fins) and can connect different pipe materials.

Specifications for Pan Connectors



125 mm x 110 mm

The straight connector (APCS2) is used when the spigot outlet on the commode is in line with the SWR pipework system.



125 mm x 110 mm

The flexible connector (APCC2) is extendable from 225 to 550 mm and is very useful when the SWR pipework is at a significant distance from the spigot outlet or if it is in a vertical position.

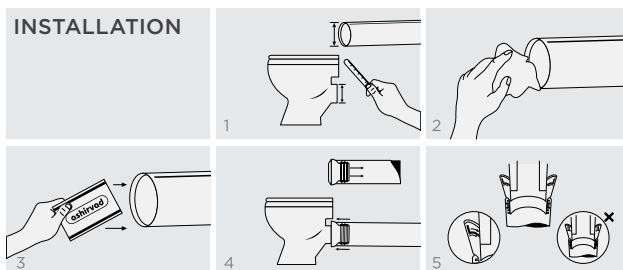


125 mm x 110 mm

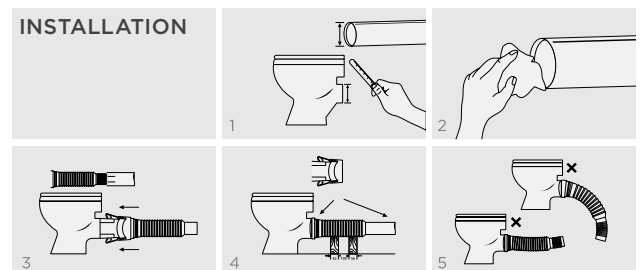
125 mm x 110 mm

The two ranges of offset connectors (APCO2 and APCO4) are useful if there is a mismatch between the centres of the spigot on the commode side and the SWR pipework. Offsets of up to 40 mm can be catered to by these two pan connectors.

Pan Connector Assembly (Straight/Offset)



Pan Connector Assembly (Collapsible)



www.ashirvad.com

Ashirvad Pipes Pvt. Ltd., 4-B, Attibele Industrial Area, Hosur Road, Bengaluru - 562 107, India.
Ph: +91 80 2806 1000 / 2806 1700 Fax: +91 80 2806 1080
For more information or customer care write to: info@ashirvad.com or Call +91 9902 333 333



Ver. No.: 07 - 10/18



by aliaxis

SMART WATER MANAGEMENT
PLUMBING . SANITARY . AGRICULTURE

